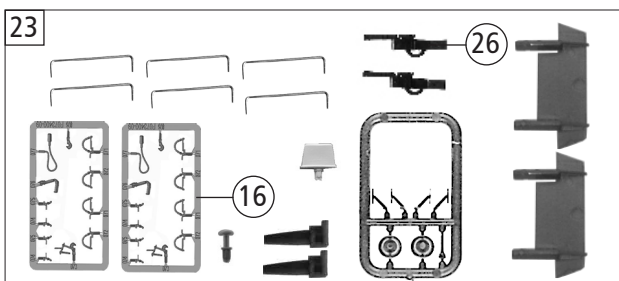
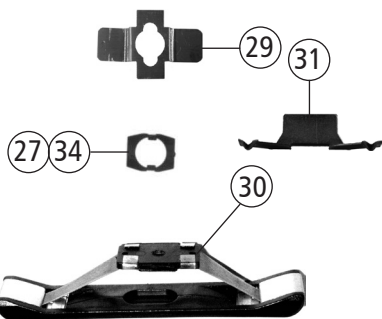
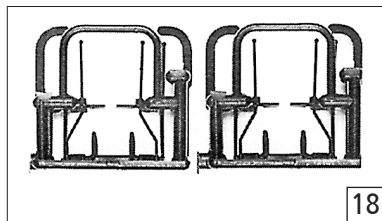
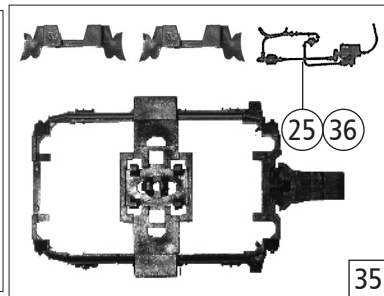
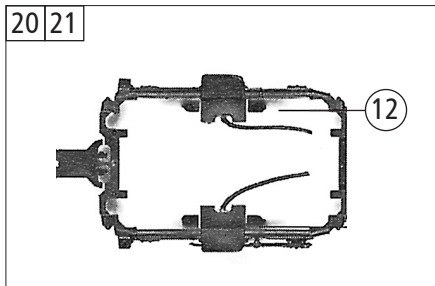
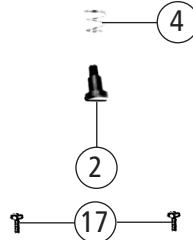
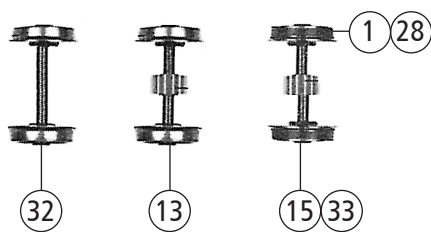
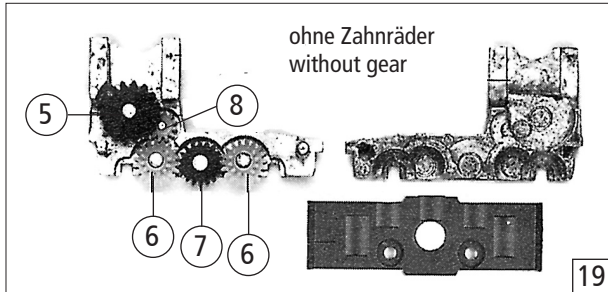
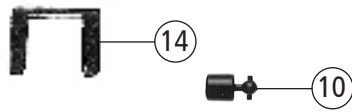
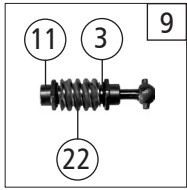


Pos. Nr. Pos.no.	Beschreibung Description	Art.-Nr. Art.no.	Preisgruppe Price bracket
52563	SETG V 100	=	
52564		=	🔊
58564		~	🔊
1	Gehäuse komplett Nr. V 100.53 Body complete no. V 100.53	148237	18
2	Kabine komplett Nr. V 100.53 Cabin complete no. V 100.53	148238	20
3	Platine komplett Printed circuit assembly	141790	19
4	Kabinfenster Cabin window	148240	8
5	Führerstand Drivers cab	128213	8
6	Brückenstecker PLUX-16 Jumper	133241	10
7	Motor Motor	143272	28
8	Steuerrad Steering wheel	148242	3
9	GF - Schraube M2x5 mm GF - Screw	114966	3
10	E-Lokführer E-Loce driver	116668	6
11	Motordistanzplatte Spacer	117202	3
12	Antenne klein Antenna small	115938	3
13	Grundrahmen Main frame	148232	19
14	Dekoderdeckel Decoder cover	123305	4
15	Puffer flach Buffer flat	148233	3
16	Puffer gewölbt Buffer vaulted	148234	3
17	GF-Schraube M2x16 mm GF-Screw	115094	3
18	Kardanschale kurz Cardan shell short	87129	4
19	Dach Roof	148241	7
20	TS - Linsen Part set lenses	141789	8
21	Gehäuse deckel Body cover	148239	7
22	UIC-Steckdose UIC-Socket	114633	3
23	Lokpfeife Loco whistle	135336	5
24	TS-LED-Abdeckung Part set-LED-covers	141792	5
25	Kohlebürste Carbon brush	89743	6
26	Bürstenhalter Motor Carbon brush holder	89744	6
27	Bürstenfeder Carbon brush spring	86207	6
28	Schienenräumer Railguard	120384	4
<b>Sound</b>			
29	Sounddecoder Sound-decoder	147377	39
30	Lautsprecher Loudspeaker	129524	13
31	Soundbox Soundbox	139681	6
<b>AC - Wechselstrom</b>			
32	Grundrahmen Main frame	148244	19

Änderungen in Konstruktion und Ausführung vorbehalten  
We reserve the right to change the construction and specification



Pos. Nr. Pos.no.	Beschreibung Description	Art.-Nr. Art.no.	Preisgruppe Price bracket
52563	SETG V 100	=	
52564		=	
58564		~	
1	Hafringsatz 10Stk. 8,3-10,2mm Set with traction tires 10 pieces	40068	---
2	FK-Schraube M2x2,8/2,5 mm FK-Screw	85704	4
3	Beilagscheibe Washer	86108	3
4	Konusfeder Cone spring	86202	3
5	Schneckenzahnrad doppelt Gear double	86419	6
6	Zahnrad Z=19/12 M 0.4 Gearwheel	86424	4
7	Zahnrad Z=18 gerade M=0.4 Gearwheel	86460	3
8	Zahnrad Z=12/ M 0.4 Gearwheel	86471	3
9	Schneckenatz komplett Worm set ass.	86868	13
10	Gelenkwelle Cardan shaft	87138	4
11	Lager für Schneckenachse Bearing for worm axle	89749	6
12	Radkontakt Wheel contact	89879	6
13	Radsatz mit Zahnrad ohne Hafring Wheelset w. gearwheel w/o traction tires	148235	11
14	Schneckendeckel Worm cover	94707	4
15	Radsatz mit Zahnrad mit 2 Hafringen Wheelset with gear with 2 traction tires	148236	12
16	TS - Bremschläuche + Zughaken Part set of brake tubes & coupling hooks	139832	7
17	SK - Schraube M2x5 mm SK - Screw	115205	3
18	Aufstiegsatz Rear ladder set	120379	8
19	Getriebesatz ohne Zahnräder Gear set without gears	120386	13
20	Drehgestellblende kurzer Vorbau komplett Bogie frame short front end completely	120392	12
21	Drehgestellbl. langer Vorbau komplett Bogie frame long front end completely	120394	12
22	Schnecke Wormgear	86704	6
23	Zurüstbeutel Bag with accesories	148243	18
24	Standardkupplung Standard coupling	89246	6
25	DG-Blendensteckteil Bogie-cover plug-in parts	148245	4
26	Kurzkupplung-Vorentkupplung Short coupling- pre-uncoupling	115550	6
27	Schleiferhalter Collector holder	146959	4
<b>AC - Wechselstrom</b>			
28	Hafringsatz 10Stk. 10,3-12,4mm Set with traction tires 10 pieces 10,3-12,4	40074	---
29	Kontaktblech Contact plate	108722	4
30	Schleifer Slider	86030	14
31	Achslager Axle bearing	89883	6
32	HO-Wechselstromradsatz Wheelset AC	90388	7
33	Radsatz mit 2 Hafrreifen AC Wheelset w. 2 traction tires AC	90476	12
34	Schleiferhalter Collector holder	146959	4
35	TS-Blende vorne AC Part set-Bogie AC	120417	10
36	DG-Blendensteckteil Bogie-cover plug-in parts	148245	4